



Belvedere Place, Brixton, SW2

1 bedroom flat - purpose built for sale

£375,000

Leasehold

Property Details

This light and airy apartment has a central entrance hall, off which open all rooms, including a comfortable open plan living room with plenty of dining space and a fully equipped contemporary kitchen. The double bedroom is a great size and there is an added built-in cupboard in the hallway which offers extra storage options. This fantastic flat is completed by a family-sized modern bathroom. The property further benefits from access to loft space for further storage, secured bike storage and beautifully maintained communal gardens and grounds. The development is securely gated and this property comes with the bonus of a private garage which has the option of being rented out should the purchaser not require it's use.

Features

- One double bedroom
- Over 450 square feet of internal space
- Secure modern build
- Large communal gardens
- Fantastic storage options
- Private garage
- Secure bike storage by arrangement
- Central location, close to the action
- Walking distance to Northern and Victoria lines
- Chain-free

Council tax band

EPC rating C (74)

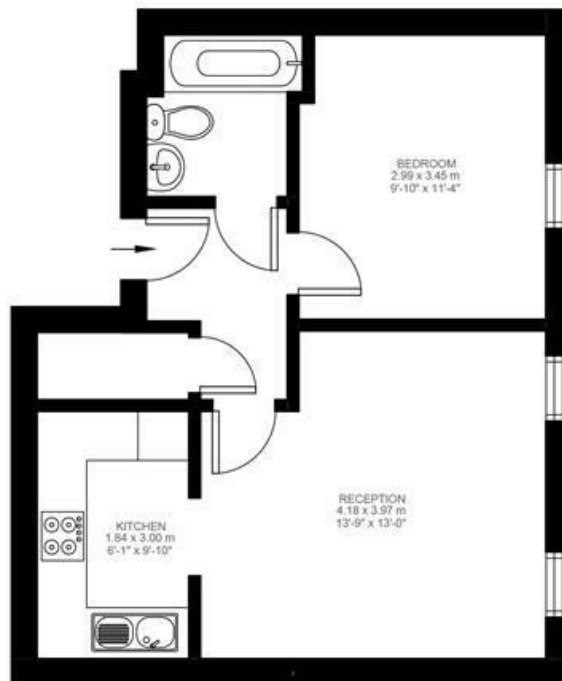


Belvedere Place, Brixton, SW2

Belvedere Place, Brixton, SW2

1 Bedroom Flat

Approximate internal area: **451 sqft 42 sqm**



Third Floor



While we do try our very best, floor plans are produced as a guide only and we take no responsibility for the precise accuracy with which any property is represented.

Belvedere Place, Brixton, SW2

